

Storyteller

EITELJORG MUSEUM MAGAZINE

Eiteljorg Museum of
American Indians and Western Art
Telling Amazing Stories
FALL-WINTER 2021-2022

Honoring Women

SHIFTING BOUNDARIES

THE EITELJORG CONTEMPORARY
ART FELLOWSHIP

NOV 13, 2021-FEB 6, 2022

P2



WELCOMING FAMILIES BACK TO THE EITELJORG



**PROJECT 2021
NEARS FINISH LINE**

P7-10



**FIFTH THIRD BANK
JINGLE RAILS: THE
GREAT WESTERN
ADVENTURE**

NOV 20, 2021-JAN 17, 2022

P4

**DÍA DE MUERTOS
COMMUNITY
CELEBRATION**

P6

**A DEEP DIVE WITH
NATIVE AMERICAN
ART AND ARTISTS**

P11

**REMEMBERING JENNIFER
COMPLO McNUTT**

P15

Western Art Society receives award for efforts supporting the Eiteljorg

By Kay Hinds, development coordinator

The Eiteljorg's Western Art Society will receive the 2021 Outstanding Philanthropy Group Award during a November celebration of the 38th annual Indiana Philanthropy Awards, presented by Aly Sterling Philanthropy and the Association of Fundraising Professionals-Indiana Chapter.

Established 21 years ago, the society is a group of Western art lovers who originally commissioned and donated works of art for the museum's collection. In 2005, the Western Art Society helped create the *Quest for the West*® Art Show and Sale. Now a nationally recognized Western art event, *Quest* typically features works by 50 contemporary Western artists who are selected to participate in the show. *Quest* has generated approximately \$16.2 million, with artists receiving \$13.1 million and the museum netting nearly \$3.1 million during the last 16 years.

An important annual fundraiser for the museum, *Quest* — presented by the Western Art Society — supports not only the museum but the Western art field, helping enhance the collection of Western art and support the artists who create it.

The society's members also underwrite the *Quest for the West*® Harrison Eiteljorg Purchase Award. Thanks to their gifts, the museum owns works of art by Dennis Doheny, H. David Wright, Robert Griffing, David Smith, Arturo Chavez, Greg Kelsey, P.A. Nisbet, John Buxton, Doug Hyde, Logan Maxwell Hagege, Josh Elliott, John Moyers, Kristii Melaine, George Hallmark, Mark Kelso and John Fawcett.

Top statewide public relations awards go to museum marketing team

In May, the Eiteljorg's Marketing and Communications team competed in the Pinnacle Awards contest presented by the Public Relations Society of America, Hoosier Chapter, and won two statewide awards for excellence. The competition recognized the best projects and programs in the public relations industry in Indiana for work done during the unusual year of 2020.

The Eiteljorg's *Storyteller* magazine won the Pinnacle Award for best magazine — the top award given in that category — for 2020, after previously receiving the Award of Honor the two previous years. PRSA judges' comments: "The project was well thought out with thorough planning. The ability to adapt to the changing landscape due to the pandemic took diligence and creativity to meet the required deadlines . . . The project reflected a high level of creativity and professionalism."

A new PRSA contest category recognized public relations campaigns significantly altered by the pandemic. The Eiteljorg's strategy for transforming its 2020 *Quest for the West*® Art Show and Sale into an all-virtual sale, using the website quest.eiteljorg.org and other tactics, received the Award of Honor for COVID Communications. Judges' comments: "Great results and nice to see that the format was so well received among participants . . . Great way to transition from in-person to virtual."

The museum's award-winning marketing team includes marketing and communications director Bert Beiswanger, public relations manager and *Storyteller* editor Bryan Corbin, graphic designer Mike Fasig of Honeymoon Image & Design, digital marketing coordinator Sophia Holt-Wilson and former digital marketing manager Hyacinth Rucker. Former interns Sara Spieth and Caroline States assisted in both projects.

On the cover:

Anita Fields (Osage / Muscogee), *Starr Man*, 2015, clay, slip, gold luster glaze. Collection of the Fred Jones Jr. Museum of Art, The University of Oklahoma, Norman; The James T. Bialac Native American Art Collection, 2010



The 2003 oil painting *The Golden Mountain, Arriving San Francisco, 1865*, by Mian Situ was purchased by the Eiteljorg with funds provided by the Western Art Society, whose members are seen here during *Quest for the West*® weekend. Image by Brittany Erwin Photography.

The 2003 oil painting *The Golden Mountain, Arriving San Francisco, 1865*, by Mian Situ was purchased by the Eiteljorg with funds provided by the Western Art Society, whose members are seen here during *Quest for the West*® weekend. Image by Brittany Erwin Photography.



Eiteljorg Storyteller

Eiteljorg Museum Magazine

Winner of the Pinnacle Award from the Public Relations Society of America – Hoosier Chapter in 2021, and winner of the PRSA's Award of Honor in 2019 and 2020

Volume 16, Number 3

President and CEO

John Vanausdall

Vice President for Advancement

Nataly Lowder

Director of Marketing and Communications

Bert Beiswanger

Editor and Writer

Bryan Corbin

Design

Honeymoon Image & Design

Contributing Writers

Jennifer Hiatt

Alisa Nordholt-Dean

Eduardo Luna

Nataly Lowder

Elisa Phelps

Bert Beiswanger

Sophia Holt-Wilson

Kay Hinds

Contributing Photographers

Eiteljorg Museum staff, interns and archives

Hadley Fruits Photography

Brittany Erwin Photography

Zach Dobson

Applied Imagination

Anita Fields image by Melissa Lukenbaugh

Catherine Blackburn image by

David Stobbe

Joy Harjo image by Shawn Miller

Visit Indy

Warhol and the West art catalog front

cover image courtesy of the publisher

Editor's Note

Every effort is made to ensure that exhibition images published in *Storyteller* magazine accurately reflect the artworks on exhibit at the Eiteljorg Museum during the dates announced and promoted. Details of announced events and exhibitions might change too late for the *Storyteller*'s publication deadlines. For comments or questions, call 317.275.1315 or email bcorbin@eiteljorg.com.

Membership information

Contact Jennifer Hiatt at

jhiatt@eiteljorg.com or 317.275.1360



Supported by the Indy Arts and Culture Restart & Resilience Fund: An Arts Council of Indianapolis program made possible by Lilly Endowment Inc.

Make holiday memories at the Eiteljorg this season

Friends,

As we enter the fall and winter season, we look forward to seeing families enjoying the Eiteljorg again during the holidays, even with public health requirements that are necessary.

We begin on a bittersweet note. On Aug. 27, the Eiteljorg and arts community suffered a great loss when Jennifer Complo McNutt, our curator of contemporary art, died following a long illness. During her 30 years at the museum, Jennifer was a passionate advocate for contemporary art, and she was the driving force behind the Eiteljorg Contemporary Art Fellowship and its biennial exhibitions. As you will read in the coming pages, through her efforts the Eiteljorg acquired many remarkable works of contemporary Native art and built lasting relationships with the artists. Jennifer will be missed by family, friends, artists and colleagues.

While the experience of visiting the museum has changed during the pandemic, what has remained consistent is the support of a diverse audience of friends such as you.

Thanks to dedicated supporters,

including the Western Art Society, the Eiteljorg again was able to conduct the *Quest for the West*® Art Show and Sale in person in September. It was an honor to host our special guest, acclaimed actor Wes Studi (Cherokee), hear his firsthand account of his groundbreaking experience in the movie industry and present him with the Eiteljorg Museum Award for Excellence.

During summer weekends, the museum often was filled with the sound of guests streaming through the building. In addition to visitors, you might hear other uplifting sounds in the museum these days: construction crews hard at work.

The second-floor Native American Galleries are temporarily closed for re-construction, but when they reopen in June 2022, they will be spectacular. I want to thank Dorene Red Cloud (Oglala Lakota), associate curator of Native American art, and Elisa Phelps, vice president and chief curatorial officer, for their leadership on this important effort.

Also, a crew has worked



Acclaimed actor Wes Studi (Cherokee), left, with Eiteljorg President and CEO John Vanausdall, right, at Studi's *Quest for the West*® appearance on Sept. 12, 2021. Studi received the prestigious Eiteljorg Museum Award for Excellence for his support of Native American arts and languages. Image by Brittany Erwin Photography.

to renovate our children's discovery area, the R.B. Annis Western Family Experience, and the Stephen and Sharon Zimmerman Resource Center, both located within the Nina Mason Pulliam Education Center. They reopen in November with new learning activities for young visitors. Our thanks go to Alisa Nordholt-Dean, vice president for public programs and Beeler Family director of education, and Steve Sipe, director of exhibitions and graphic design, for their work and creativity.

These and other capital projects, together called *Project 2021*, are essential to keeping the Eiteljorg relevant for the years ahead. Contributions from our members and donors have carried us a great distance, but we still need our loyal members to help us across the last mile, as you will read in the coming pages.

We are continually grateful for our supporters' generosity, whether through grants from foundations, gifts from philanthropists, contributions from members, donations of valuable art from collectors, or through museum volunteers donating their time and enthusiasm to serve. Some supporters prefer to remain anonymous; others we will more publicly acknowledge later, but let me collectively


recognize all now with a sincere "thank you."

We also want to thank and congratulate registrar Christa Barleben, who is leaving the museum collections staff after 11 years. Christa worked tirelessly to manage the logistics of 30 exhibitions, acquisitions of 2,500 artworks, loans of 2,000 items and shipping art for 10 *Quest* art sales and shows. Her skills, competence, flexible nature, good humor and infectious enthusiasm have made her an amazing employee who has been so important to the Eiteljorg's successes.

We invite you to our exciting exhibitions and events at the Eiteljorg this fall and winter: the *Día de Muertos* Community Celebration taking place Oct. 30, the Eiteljorg Contemporary Art Fellowship exhibition *Shifting Boundaries* opening Nov. 13, our Fifth Third Bank *Jingle Rails* holiday attraction opening Nov. 20, and much more.

With the opening of the new children's experience and *Jingle Rails* at the same time, the holidays will be the perfect time to welcome families back to the museum.

Sincerely,


John Vanausdall
President and CEO
Eiteljorg Museum



John Fawcett, *Trading at Pierre's Hole*, 2021, oil, 30 x 40 inches
2021 *Quest for the West*® Harrison Eiteljorg Purchase Award, sponsored by the Western Art Society

SHIFTING BOUNDARIES

Eiteljorg Contemporary Art Fellowship exhibition will fascinate and inspire

Within the new exhibition *Shifting Boundaries*, Eiteljorg visitors will experience compelling, thought-provoking works of contemporary Native art, created by five artists chosen for the prestigious 2021 Eiteljorg Contemporary Art Fellowship.

Shifting Boundaries opens Nov. 13 in the special exhibitions gallery, continues through Feb. 6, and includes innovative paintings, prints, mixed media and installations by the five Fellowship artists, who are Native American or First Nations. The website contemporaryartfellowship.eiteljorg.org is a hub of information about the artists and their art and more than two decades of the Fellowship program. Public events on opening weekend and during the show's run will appeal both to those new to the world of contemporary Native art and to longtime aficionados.

Selected by a panel of three art experts, the 2021 Eiteljorg Fellows are:

Invited artist **Anita Fields** (Osage / Muscogee), of Stillwater, Oklahoma, who is nationally recognized for her ceramic art and mixed media works. One of her ceramic pieces, *Opposites Attract*, currently is on view in the exhibition, *Powerful Women II: Contemporary Art from the Eiteljorg Collection*. The Fellowship's invited artist is selected based on a lifetime of work.

Sonny Assu (Ligwilda'xw of the Kwakwaka'wakw Nations) of Campbell River, British Columbia, a painter, printmaker and installation artist whose work appears in museums in Canada.

Catherine Blackburn (English River Dene First Nation) of Thornhill, British Columbia, a multi-disciplinary artist, designer and jeweler whose work includes fashion, installation and mixed media.

Athena LaTocha (Húnkpaphá Lakota / Keweenaw Bay Ojibwe) of Peekskill, N.Y., who creates large bold landscape paintings.

Steven Yazzie (Diné / Laguna Pueblo) of Denver, a painter who also creates video and installations, and has received numerous awards.



Left:
Sonny Assu
(Ligwilda'xw of the Kwakwaka'wakw Nations)
Skoden, a'ight, STOODIS! Digital intervention on an Emily Carr painting (Skedans, 1912), 2020, archival pigment print, Edition 3/5
Loan from the artist and Equinox Gallery, Vancouver



Athena LaTocha (Húnkpaphá Lakota / Keweenaw Bay Ojibwe)
Thirteen Days, 2017-2019
Sumi and walnut ink, chamisa fibers and staining on paper
Loan from the artist

Every other year since 1999, the Eiteljorg Fellowship has provided grants to a new class of five artists to support their continuing efforts in the contemporary art field. Each Fellow receives a \$25,000 unrestricted grant, and the museum purchases more than \$100,000 in art from the Fellows to add to its collection of Native American contemporary art, considered one of the best such collections in the world.

"For 22 years, the Eiteljorg Fellowship has helped bring Native contemporary art to the forefront, casting a spotlight on the works of leading Native American and First Nations artists. The 2021 class of Eiteljorg Fellows is an exceptional group who have created intriguing works across a variety of disciplines — works that museum guests will want to experience," Eiteljorg President and CEO John Vanausdall said. "The Fellows' work underscores the vitality, imagination and innovation in today's Native art, and will encourage dialogue about contemporary art."

The artists are scheduled to attend the exhibition's opening weekend events, where the public can meet them:

- Thursday Nov. 11, 5:30-8:30 p.m.: Fellowship Award Ceremony and Celebration. Reservations: \$35 members, \$50 non-members, \$100 Fellowship Fans.
- Friday Nov. 12, 2:30-4 p.m.: Live streaming of a discussion panel with the Fellows, conducted by IUPUI Museum Studies graduate students; visit eiteljorg.org for details.
- Saturday Nov. 13, 9-9:45 a.m.: Members-only Coffee and Conversation with the artists; registration required.
- Saturday Nov. 13: 10 a.m.-12:30 p.m.: A public gallery tour open to Eiteljorg visitors of the *Shifting Boundaries* exhibition, led by the artists, followed by a question-and-answer session in the museum's Lilly Theater. Included with regular admission; museum members have free admission.

To register for events, contact Jennifer Hiatt at 317.275.1360 or jhiatt@eiteljorg.com.

On contemporaryartfellowship.eiteljorg.org are biographies of the artists and video interviews, along with highlights of the 10 prior rounds of the Fellowship and past artists. The museum has published a full-color art catalog for *Shifting Boundaries*, featuring essays about each of the 2021 Fellows, available in the Museum Store. For additional public programs, see page 12 and visit eiteljorg.org/events.



Steven Yazzie (Diné / Laguna Pueblo)
Nature Doesn't Give a S--- About You, But it's Sure Nice to Look At, 2020
Oil on canvas
Collection of the Eiteljorg Museum, Museum purchase from the Eiteljorg Contemporary Art Fellowship

"The Eiteljorg is thrilled to have this opportunity to continue to build the museum's incredible collection of Native and Western art, and we are honored to welcome these five accomplished artists as Fellows. The museum's longstanding commitment to contemporary Native art and artists was unique when the Fellowship program began, and it is exciting to see how the field has grown and evolved over more than two decades," Eiteljorg Vice President and Chief Curatorial Officer Elisa Phelps said.

This year's exhibition is presented in remembrance of Jennifer Complo McNutt, curator of contemporary art, who died recently. For each previous Fellowship, she organized the selection round, met with the Fellows, curated the exhibitions of their work, and ultimately made a major impact on the world of contemporary art. Read more about Jennifer's remarkable accomplishments on page 15.

Catherine Blackburn (English River Dene First Nation)
Bodies and Homelands, 2020, laminated LightJet photo mounted on Dibond®
Loan from Global Affairs Canada



Anita Fields (Osage / Muscogee)
To Know Your People Are Beautiful, 2020
Wool, ribbon, silk, photo-printed on silk, embroidery thread, clay buttons, top hat with hackle feathers. Four-ply braided and beaded yarn streamers, cut out symbols and patterns from copies of historical, archival, Osage documents
Collection of the Eiteljorg Museum, Museum purchase from the Eiteljorg Contemporary Art Fellowship

SHIFTING BOUNDARIES
EITELJORG CONTEMPORARY
ART FELLOWSHIP 2021
NOV 13, 2021–FEB 6, 2022

PRESENTED BY:
Lilly Endowment Inc.
A Private Philanthropic Foundation

SPONSORED BY:
EFROYMSON
FAMILY FUND
A CICF FUND

#EJFellowship

WITH ADDITIONAL SUPPORT FROM:
David H. and Barbara M. Jacobs Foundation
David H. Jacobs



All Aboard! Holiday favorite *Jingle Rails* opens Nov. 20, rolls into the Eiteljorg with a new San Francisco adventure

By Bert Beiswanger, director of marketing and communications

Traveling out West to America's cherished national parks has been a favorite trip for many American families. This year, the West was a renewed popular vacation destination for those who had a pent-up desire to explore America's natural wonders and treasures. The Eiteljorg once again brings a taste of that journey to families this holiday season with the return of the Fifth Third Bank *Jingle Rails: The Great Western Adventure*, opening Nov. 20 and running through Jan. 17.

Every year, visitors excitedly look forward to the latest addition to the museum's holiday model train attraction, and they will experience something incredible this year — a chance to leave their hearts in San Francisco. As with the Hollywood or Route 66 displays of past years, San Francisco is the new *Jingle Rails* scene in 2021; it features downtown San Francisco, Alcatraz Island, the famous San Francisco hills and bay,



A *Jingle Rails* train rambles past a miniature of the Yellowstone National Park Lodge.

the Palace of Fine Arts, Fisherman's Wharf coastline, Pier 39, an incline trolley and more.

A world in miniature

In *Jingle Rails*, visitors enter a nostalgia-filled model railroad of nine G-scale trains that ramble over trestles and through tunnels along 1,200 feet of track. The model trains wind past whimsical, artistic representations of many treasured scenes, including

the skyline of downtown Indianapolis and landmarks of the American West, decorated with holiday lights and accentuated with railroad sounds. The amazing backdrops are created from natural materials such as twigs, bark, leaves, pine cones, seed pods, nuts and more.

The model railroad's itinerary starts with a miniature of the iconic Indianapolis Motor Speedway — complete with Pagoda, scoring pylon, Hall of Fame Museum, IMS Radio Network audio, Goodyear Blimp, working Indy slot cars that race around the track and more. Guests this year will catch a glimpse of the Fifth Third Bank / Rahal Letterman Lanigan Racing / Graham Rahal Indy car speeding by on the track.

After visitors experience the Indiana State Fair, Lucas Oil Stadium, Monument Circle and iconic downtown buildings, the *Jingle Rails* journey takes them to iconic scenes of the West, including Las Vegas, the Grand Canyon, Yellowstone National Park, Mount Rushmore, Mesa Verde, the Golden Gate Bridge and more. The San Francisco backdrop is one of a series of scenes made possible in recent years by the Kortepeter family.

The appeal of *Jingle Rails* is multigenerational: Children of all ages love model trains, and parents and grandparents love seeing the displays of national parks that may remind them of a favorite family vacation out West. But in the moment, people simply love creating magical family holiday



RESERVE
JINGLE RAILS
TICKETS ONLINE
Eiteljorg.org/JingleRails

memories. This year will be doubly appealing for families, since the return of *Jingle Rails* coincides with the grand reopening of the museum's children's discovery area, the R.B. Annis Western Family Experience.

A family tradition

Now in its 12th year, *Jingle Rails* is made possible with the help of many supporters, such as title sponsor Fifth Third Bank, whose downtown building, custom train engine and aforementioned Indy car are featured in the display.

The creative team at Applied Imagination in Alexandria, Ky. — the botanical architecture firm founded by Paul Busse — designed and built *Jingle Rails* and its additions. Each year, they assemble the track and backdrops in the museum's Clowes Sculpture Court the week before the attraction opens. During the 10-week run of *Jingle Rails*, a hard-working team of volunteer model train enthusiasts, the "train guys," ensures the model trains run smoothly and

answers visitors' questions. Public programs take place during *Jingle Rails*; see the calendar of events on pages 12-14 for details.

One of the most affordable local holiday attractions, *Jingle Rails* is included with regular museum admission. Members are free, but when reserving tickets online should enter their member number.

Children ages 4 and under have free admission.

Don't Wait In Line, Reserve Your Tickets Online

To help manage crowd flow and to enhance the experience, visitors to *Jingle Rails* — museum members and non-members alike — are urged to reserve their tickets online. Check Eiteljorg.org/JingleRails for more details.

The Indianapolis Motor Speedway scene includes a miniature Fifth Third Bank / Rahal Letterman Lanigan Racing / Graham Rahal Indy car.

To volunteer to help with *Jingle Rails*, contact jharkness@eiteljorg.com or 317.275.1325.

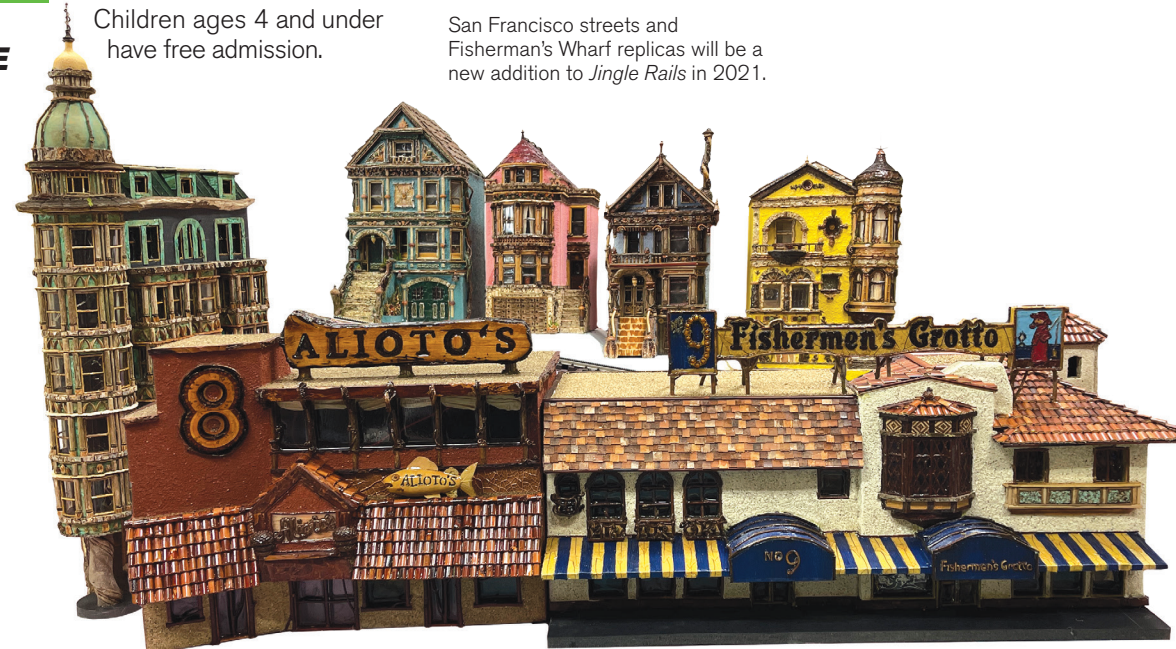
San Francisco streets and Fisherman's Wharf replicas will be a new addition to *Jingle Rails* in 2021.

FIFTH THIRD BANK
JINGLE RAILS: THE GREAT WESTERN ADVENTURE
NOV 20, 2020—
JAN 17, 2022



Sponsored by:
Butler Family Foundation
The Kortepeter Family
The Sunrise Foundation, a fund of the Indianapolis Foundation

#JingleRails



The miniature backdrop of the Indiana State Fair returns to this year's *Jingle Rails*.



DÍA DE MUERTOS DAY OF THE DEAD

SATURDAY
OCT 30
FREE admission

COMMUNITY ART AND OFRENDA EXHIBIT

OCT 10–NOV 2
FREE to view in Lilly Theater

#EJDOD



Día de Muertos Community Celebration returns to the Eiteljorg as an in-person event Oct. 30

By Alisa Nordholt-Dean, vice president for public programs and Beeler Family director of education

Curated by Arte Mexicano en Indiana, the Community Art and *Ofrenda* exhibit is open and free to visit Oct. 10 through Nov. 2. This year's featured artist Eduardo Robledo is a Mexico City-based printmaker who creates mythic images utilizing the stories of past and present Mexico in his finely wrought linocuts. *Ofrendas* are designed and created by local organizations to honor and remember those who have passed away. Add a personal note to the community *ofrenda* or submit a photo of your loved one for inclusion in the digital slideshow. Send your photos to museumprograms@eiteljorg.com.

The FREE *Día de Muertos* Community Celebration returns on Saturday, Oct. 30, 10 a.m.-7 p.m. with an emphasis on community. Look for a full lineup of performances by local favorites, including Grupo Folclórico Macehuani, Ballet Folklórico Mosaicos, the Christ Church Cathedral Hispanic Choir, Juan Carlos Alarcon and more. Pick up your favorite sweets and *pan de muerto*, create art with visiting artists, talk with community partners and visit the community curated art and *ofrenda* exhibit.

In an effort to keep visitors safe, COVID-19 safety measures and capacity limitations will be in place. **Admission is free, but pre-reserved timed tickets are required; visit eiteljorg.org/dayofthedead.** Space is limited.

La celebración comunitaria del Día de Muertos regresa al Eiteljorg como un evento en persona el 30 de octubre

Spanish translation by Eduardo Luna

Curada por Arte Mexicano en Indiana, la exhibición de Arte y Ofrendas Comunitarias está abierta y se puede visitar gratuitamente hasta el 2 de noviembre. El artista destacado, Eduardo Robledo, es un grabador con sede en la Ciudad de México que crea imágenes míticas utilizando las historias del pasado y el presente de México en su linograbados de delicado diseño. Las ofrendas están diseñadas y creadas por organizaciones locales para honrar y recordar a los fallecidos. Agregue una nota personal a la ofrenda de la comunidad o envíe una foto de su ser querido para incluirla en la presentación de diapositivas digital. Envíen sus fotos a museumprograms@eiteljorg.com.

La celebración comunitaria GRATUITA del Día de Muertos regresa el sábado 30 de octubre de 10 a.m. a 7 p.m. con énfasis en la comunidad. Busque una lista completa de actuaciones de los favoritos locales, incluido el Grupo Folclórico Macehuani, el Ballet Folklórico Mosaicos, el Coro Hispano de la Catedral de la Iglesia de Cristo, Pianista Juan Carlos Alarcón y más. Obtenga sus dulces favoritos y pan de muerto, cree arte con artistas visitantes, hable con socios de la comunidad y visite la exhibición de ofrenda y arte curado por la comunidad.

En un esfuerzo por mantener a los visitantes seguros, se implementarán las medidas de seguridad COVID-19 y las limitaciones de capacidad. **La entrada es gratuita, pero se requieren boletos reservados con anticipación; visite eiteljorg.org/diademuertos.** El cupo es limitado.

PROJECT 2021: TELLING YOUR STORIES

The Eiteljorg Museum's capital/endowment campaign has hit many milestones in its goals to reconstruct and reinstall the Western Art Galleries and Native American galleries, renovate the education center, expand the multipurpose events facility and increase the size of the museum's endowment. The coming pages provide updates on all these efforts. Learn how you can get involved in *Project 2021: Telling Your Stories*.



The 38-foot *Legend of Wasgo* Totem Pole, created by carver Lee Wallace (Haida), is a focal point of the R.B. Annis Western Family Experience. New features will surround the Totem Pole after the area is renovated.



85 percent raised – Your help needed for the last 15 percent

In many editions of *A Note From Nataly*, I have focused on ways to give to the museum, most of them focused on potential future gifts through your estate planning. What you may have been unaware of is that we were in the "quiet phase" of a capital endowment campaign, *Project 2021*. In 2016, the Eiteljorg Board of Directors launched an ambitious goal: to raise \$40 million to build our endowment and \$15 million for capital projects. Campaigns of this magnitude take roughly seven years, and we pushed the boundaries to reach our goal by the end of 2021. The pandemic has pushed us into 2022, but not by much.

Ambitious? Yes. Unachievable? No.... Thanks to people like you

I am pleased to publicly announce we are at 85 percent of our goal, and we need your help to finish the last 15 percent! Through May 1, 2022, gifts of all sizes will help the Eiteljorg tell amazing

stories for generations to come. You are the reason we can meet this challenge!

Combined with public programming and our growing collections, *Project 2021* is set to strengthen our educational impact and enhance visitor experiences far into the future. Will you join us and be a part of the story as we reach the journey's end of *Project 2021*? Gifts of all sizes truly make a difference, and with community support, we will be able to reach all we have aimed to accomplish.

The complete reconstruction and reconceptualization of the second-floor Native American galleries is one of several highlights of the *Project 2021* campaign, and one of the final phases that still needs funding. We would love your help in reaching this milestone. Please join us in the celebration and unveiling of this reinstatement in June 2022, along with everything else that *Project 2021* has to offer.

Follow the excitement and see how your gift of any size will make an impact

Visit Eiteljorg.org/Project-2021 to learn the stories of *Project 2021* as it enters its final, exciting phases. We invite you to join in the enthusiasm as we share the countdown to our funding goal and offer sneak peeks of the projects as they come to fruition. Please accompany us as we near the end of this exciting journey. Your donation towards *Project 2021*, big or small, will make a difference and help us reach our goal. Together, with your help, we will continue to tell amazing stories, and we welcome you to be a part of the future. Please reach out to me directly if there is anything I can do to help!

Nataly

Nataly Lowder
Vice President for Advancement
317.275.1311
nlowder@eiteljorg.com

Eiteljorg Museum
500 W. Washington St.
Indianapolis, IN 46204
www.eiteljorg.org

P.S. Enjoy the following pages about the campaign and visit Eiteljorg.org/Project-2021 for more details about and to make a donation to *Project 2021*. Your gift will help us on this journey for generations to come.

Continued from previous page

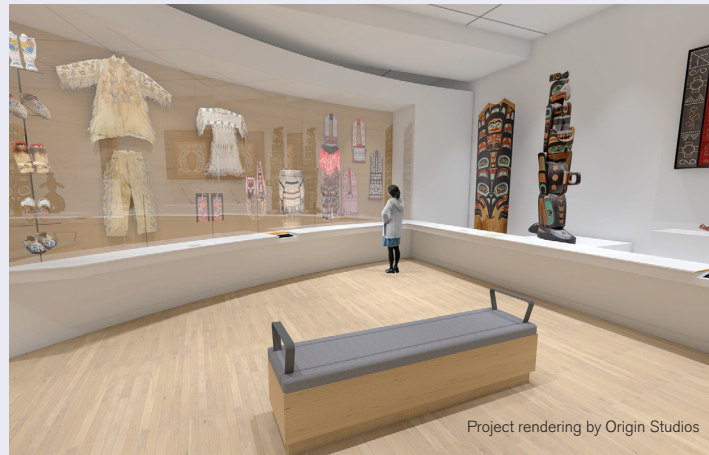
PROJECT 2021: A CLOSER LOOK AT THE PROJECTS

NATIVE AMERICAN GALLERIES RECONSTRUCTION AND REINSTALLATION

By Bryan Corbin, *Storyteller* magazine editor

Until recently, the Eiteljorg's Native American Galleries appeared much as they did in 1989 when the museum first opened. Over the years, the museum's collection of important Native artworks of the U.S. and Canada has grown substantially, including with the recent addition of artworks by Great Lakes artists. Within the museum profession, there has been a dramatic rethinking in how Native peoples' artworks ought to be exhibited, for greater cultural context and accuracy. Also, advancements in exhibition design now can provide visitors more dynamic experiences in museums.

Now, as part of *Project 2021*, the Eiteljorg is completely reconstructing and reinstalling its Native American Galleries, which temporarily closed in September. Designed and developed by the firms Origin Studios and Kubik Maltbie, the new second-floor galleries will reopen to the public in June 2022.



Project rendering by Origin Studios

with museum objects displayed like specimens; instead, artworks will be in all-glass cases, interacting with each other, viewable in 360 degrees, with warm lighting and natural wood accents. Activity tables with sliding magnifiers will bring Native jewelry up close to admire. Artworks will be enhanced with digital labels, and interactive touchscreens will allow visitors to take a deeper dive into stories. Visitors with visual impairment will be able to more fully experience the art through audio descriptions they can access on their smartphones. With an emphasis on accessibility, the galleries will have spots for visitors to pause and rest or enjoy public programs.

The exhibition's floorplan is non-sequential, so visitors can move in different directions or "tributaries," come back, and gain understanding as they flow through the space. Nearly 300 artworks — pottery, prints, ribbonwork, beadwork, weavings, paintings, ledger art, baskets, dolls and jewelry — will tell stories about the Native peoples who created them.

Great Lakes cultures highlighted

Featuring Native artworks from across North America, the exhibition spotlights the art of the Great Lakes, particularly a collection that the Eiteljorg acquired in 2019 through a \$2.83 million grant from the Lilly Endowment Inc. In the Connected by Water room, visitors will see beautiful examples art from the Great Lakes and surrounding areas.

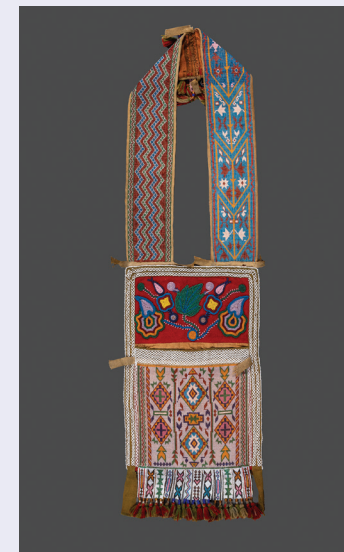
At the end of the exhibition, a Flexible Space will feature video messages from Native artists and individuals, and an opportunity for guests to reflect on what they learned. There will be a "rapid response" space for temporary exhibits related to current events, or to display artworks created by the museum's Artists in Residence. The galleries' exit — which can also serve as an alternate entrance for those going the opposite direction through the exhibition — reiterates the Land Acknowledgement and features a beautiful installation by Anita Fields (Osage / Muscogee), who is the 2021 Eiteljorg Invited Fellow, titled *Considering the Earth and Above*.

Re-envisioning the Native American galleries is the result of several years of research and planning by the Eiteljorg staff and Board, in consultation with the museum's Native American Advisory Council.

A complementary project is the redesign and relaunch in 2022 of educational resources found on eiteljorg.org. Based on feedback from parents and educators who regularly seek supplemental information on the Native peoples of Indiana, the additions will include downloadable lesson plans and related resources easily searched by grade, subject and keywords.

Native American Gallery Reconstruction and Reinstallation Sponsors

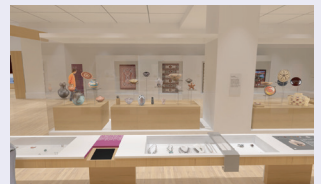
- Allen Whitehill Clowes Charitable Foundation**
- Lilly Endowment Inc.**
- National Endowment for the Arts**
- National Endowment for the Humanities**
- Nicholas H. Noyes, Jr. Memorial Foundation, Inc.**



Unrecorded Ojibwe Artist Bandolier Bag, ca. 1875
Loom woven beadwork bag; glass seed beads, glass basket beads, wool cloth, wool fox braid, wool yarn, cotton cloth
Collection of the Eiteljorg Museum
Museum purchase with funds provided by a grant from Lilly Endowment Inc.

TO SUPPORT PROJECT 2021

Help us complete *Project 2021* by donating today. With your help, the Eiteljorg can achieve its goals. Any contribution, no matter the amount, helps. Naming and sponsorship opportunities also are available in various prominent locations in the museum. Contact Nataly Lowder, vice president for advancement, at nlowder@eiteljorg.com or 317.275.1311. For more information or to make your donation to *Project 2021*, visit Eiteljorg.org/Project-2021.



Project rendering by Origin Studios



Unrecorded Mohawk Artist Cradleboard, ca. 1875
Carved and bent wood; wood, paint, rawhide, metal
Collection of the Eiteljorg Museum
Museum purchase with funds provided by a grant from Lilly Endowment Inc.

ALLEN WHITEHILL CLOWES SCULPTURE COURT: EXPANSION

You might have attended one of the many events held in the Eiteljorg's multipurpose rental space, the Allen Whitehill Clowes Sculpture Court. Whether you toured *Jingle Rails*, caught a museum music performance or lecture, or were a guest at a wedding reception or conference where the space was rented, you could enjoy the beautiful skylights and picture window view. To expand the facility to increase its seating capacity to 375, the Eiteljorg plans to move the east wall of Clowes Sculpture Court to enclose the entire outdoor OneAmerica Terrace facing West Street, while keeping the same overall architectural style. This will create more room for additional Indian Market artist booths and *Jingle Rails* model train scenes, and make it possible to host larger rental events. The Eiteljorg is seeking partners for the 2022 expansion.



Project renderings by Browning Day

Experiencing the galleries

When visitors enter the new space, they will be met with a Land Acknowledgement that the Eiteljorg sits upon the lands of the Miami, Potawatomi, Delaware, Shawnee, Peoria and Kickapoo, as well as greetings from these groups in their Native languages. The highlight of this introductory space is a stunning mobile installation artwork by 2019 Eiteljorg Fellow Hannah Claus (Bay of Quinte Mohawk), *water song: peemitanaahkwahki sakaahkweelo*, which pays homage to the Miami peoples' creation story.

Inside the new galleries, a large interactive digital map of North America will show movement of Native peoples before and after colonization (European settlement). As visitors move through gallery rooms, the exhibition will arrange the artworks — both older and newer — into three larger themes that tell stories about the peoples who created the art: Relation, Continuation and Innovation.

Native American art is not static; visitors will learn that it is created by living communities and is on a continuum, from "traditional" (now called "customary") items to cutting-edge contemporary art. Gone are the dark, bulky wooden cabinets

Continued from previous page

NINA MASON PULLIAM EDUCATION CENTER

Improvements to the Nina Mason Pulliam Education Center — the space that includes the R.B. Annis Western Family Experience, the Stephen and Sharon Zimmerman Resource Center, the Watanabe Family Library and the TCU and Dr. Ann H. Hunt studios — are part of *Project 2021*. Donations and gifts from supporters have allowed the Eiteljorg to complete these phases of the project. With families in mind, the reopening of the children's discovery area, the R.B. Annis Western Family Experience, will coincide with the opening of the museum's model train attraction, *Jingle Rails*.

R.B. ANNIS WESTERN FAMILY EXPERIENCE: GRAND REOPENING

In discovery area about five families of the West, children will lead their grownups in learning

By Alisa Nordholt-Dean, vice president for public programs and Beeler Family director of education

Inside the R.B. Annis Western Family Experience, opportunities for play, discovery and creativity abound. The newly renovated center includes fully immersive spaces created to highlight five contemporary families with ties to the American West that will unlock children's imaginations. Designed with our youngest visitors and their grownups in mind, the R.B. Annis Western Family Experience reopens in mid-November after being closed for recent upgrades. Here is a sneak peek:

Starting at the Totem Pole, follow the forest down the stairs and into the brand new R.B. Annis Western Family Experience in the Nina Mason Pulliam Education Center. Begin the journey at the Drs. Richard and Rebecca Feldman Totem Pole Interpretation Alcove and the *Legend of Wasgo* Totem Pole, a 38-foot pole created by Haida carver Lee Wallace. Did you know that an authentic Haida totem pole once stood in a neighborhood in Indianapolis? Watch a short video and learn how this pole (inspired by the original) was created and came to stand at the Eiteljorg Museum.

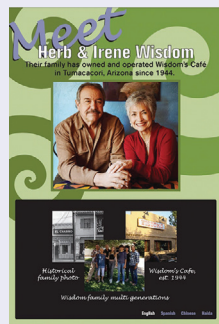


A screenshot from a video about *Legend of Wasgo*, the Totem Pole by Lee Wallace (Haida), shown in the R.B. Annis Western Family Experience.

From there, travel south to the Tumacacori, Arizona, space and meet the Wisdom Family, who have owned and operated Wisdom's Café since 1944. Check out the café menu — the Wisdoms' fruit tacos are world famous — or make up your own. In the activity, children and their grownups can gather ingredients from the raised bed "garden" and set to work in the pretend kitchen.

Next stop: Meet the Morrison Family who own and operate S&S Therapy Services, Inc. at their ranch near San Antonio, Texas. As families will learn in this realistic exhibit, there are always chores to do on a working ranch, so kindly take care of the "to do" list hanging in the barn. It shouldn't take long — groom the horses, muck the stalls, collect the eggs.

Wind around the trail and step into the Hanson Wheel and Wagon Shop area. This family-owned business in Letcher, South Dakota, builds and restores authentic horse-drawn vehicles: sleighs, wagons and even stagecoaches such as the museum's own Concord Stagecoach. Grab a few tools and help



reconstruct a wagon wheel, then climb into the stagecoach and imagine what it must have been like to travel in one riding from Cheyenne, Wyoming, to Deadwood, South Dakota, in the 1880s with eight other passengers — a 300-mile, three-day trip. The horses, the smells, the heat — oh my!

The final exhibit stop is right back here in Indianapolis where you'll meet the Shew family, a local family with ties to Ogden, Utah, and to Chinese and Western medicine and education. Step into Ms. Shew's kindergarten classroom scene and look closely at fossils and other specimens in the science lab. Are you inspired by what you see? If so, unleash your creativity and add artwork to the classroom display.

CAGLE FAMILY GATEWAY TO LEARNING

After your whirlwind trip through the R.B. Annis Western Family Experience, step through the Cagle Family Gateway to Learning, home to the museum's TCU and Dr. Ann H. Hunt studios, Watanabe Family Library and Stephen and Sharon Zimmerman Resource Center. Families can sit and relax, enjoy reading together, do research, create art, complete a puzzle or two and discover the many books and resources available. This newly renovated space also includes a quiet room for guests who need a break from the action, and a nursing room for the museum's youngest visitors and their caregivers.

Watanabe Family Library

The museum's Watanabe Family Library is home to more than 8,000 books, periodicals, videos and other materials about Native America and the American West. Students, educators and serious researchers alike can access and search the resources through the Indianapolis Public Library's online catalog at <https://indypl.bibliocommons.com/search> (select "Museum - Eiteljorg" for your location).

The museum librarian can assist with inquiries by appointment; contact 317.275.1346 or library@eiteljorg.com for information.

These improvements at the Eiteljorg Museum were made possible through your support of *Project 2021: Telling Your Stories*. Visit Eiteljorg.org/Project2021.

Experience an abundance of Native American art now on exhibit

By Elisa G. Phelps, vice president and chief curatorial officer

The next time you visit the museum, you may notice a major change. The Eiteljorg's second-floor Native American galleries are now fully closed in preparation for the June 2022 opening of a brand new exhibit. You can read about the Native American reinstallation on page 8.

While we await the reopening, there is still a lot of incredible Native American art to be seen elsewhere in the museum. The Paul Gallery on the second floor is currently home to a special exhibit, *Native American Customary Art 101*, which includes pottery, turquoise and silver jewelry, baskets, Hopi katsina carvings and beadwork. Especially noteworthy are the Great Lakes pieces including bandolier bags,



Unrecorded Artist from the Navajo Nation
Necklace, 1970s
Silver, turquoise
Collection of the Eiteljorg Museum
Gift of Helen Cox Kersting in Memory of Dr. Hans Joachim Kersting, 2008.8.648
Featured in the exhibition *Native American Customary Art 101*

NATIVE AMERICAN CUSTOMARY ART 101

Continuing through **May 2022**
Gerald and Dorit Paul Gallery
[#EJNativeArtGalleries](https://EJNativeArtGalleries)



The installation *Fancy Shawl Project* (2000) by Wendy Red Star (Crow), a 2009 Eiteljorg Fellow, is on view in the exhibition *Powerful Women II: Contemporary Art from the Eiteljorg Collection*.

POWERFUL WOMEN II: CONTEMPORARY ART FROM THE EITELJORG COLLECTION

Continuing through **Jan. 18, 2022**

Hurt and Harvey Galleries

[#EJPowerfulWomen](https://www.instagram.com/EJPowerfulWomen)

Honoring Women

HONORING WOMEN IS SPONSORED BY:



POWERFUL WOMEN II IS SPONSORED BY:



moccasins and finger-woven charm bags. These are part of the more than 400-piece Richard Pohrt Jr. collection acquired by the Eiteljorg Museum in 2019. This exhibit marks the first time they have been exhibited at the museum. Many more Great Lakes pieces will be included in the reinstallation.

Nearby in the Myrta Pulliam Gallery of Photography, you can learn about the history of Native peoples in Indiana at the timeline exhibit from *Mitohseenionki*, relocated from the old Native galleries.

The second floor also is home to *Powerful Women II*, an exhibit highlighting contemporary art by diverse women artists, especially Native

American artists, including the stunning installation of Wendy Red Star's *Fancy Shawl Project*. It's part of the museum's multi-year theme, *Honoring Women*. Contemporary Native art also will be featured in *Shifting Boundaries*, the 2021 Eiteljorg Contemporary Art Fellowship exhibit opening to the public Nov. 13. Each round of the biennial Fellowship program recognizes five Native artists and includes an exhibit, catalog, public programs, art acquisitions and a \$25,000 unrestricted award for each artist. (See the story on page 2.) And looking ahead to February 2022, more impressive contemporary works will be on view in a new show, *Contemporary Native Art 101*.

The planned Native American reinstallation has three primary goals for visitors. We want them to understand that Native peoples are still here, Native peoples are diverse, and that Native art is on a continuum across time. *Native American Customary Art 101*, *Powerful Women II*, *Shifting Boundaries* and *Contemporary Native Art 101* embrace these goals as they highlight art both past and present, and Native artists from across the United States and Canada. We hope that you will have a chance to enjoy these exhibits and the continuum of diverse Native American art they represent.



Allan Houser (Warm Springs Chiricahua Apache, 1914-1994)
Untitled (Apache Warrior), 1937
Tempera or gouache on paper
2001 Eiteljorg Fellow
Collection of the Eiteljorg Museum, Gift of Drs. William and Virginia Zinsmeister
Artwork © Allan Houser Inc.
2007.21.1
Featured in the upcoming 2022 exhibition *Contemporary Native Art 101*

CONTEMPORARY NATIVE ART 101

February through December 2022
Hurt and Harvey Galleries

Calendar

Calendar of Events compiled by Sophia Holt-Wilson

We're adding new programs and events all the time. Visit www.eiteljorg.org and sign up for our e-newsletter to stay up to date on Eiteljorg Museum happenings.

PUBLIC HEALTH NOTICE:

Visitors to the Eiteljorg Museum are required to wear face masks, socially distance and take other precautions while in the building. For the latest, visit eiteljorg.org.

NOTE TO VISITORS: The events and dates listed here were in effect at the time of publication. At different times, individual exhibits or a specific gallery may be temporarily closed for reinstallation or renovation, even as the museum remains open. Please check www.eiteljorg.org before your visit for the most up-to-date information on exhibits and activities at the museum on the day of your visit, and to register for programs.

Saturday
OCT 9

Noon
Indigenous Peoples' Day VIRTUAL Celebration
The Eiteljorg Museum is excited to celebrate and honor Native or Indigenous Peoples of North, Central and South America by hosting events in honor of Indigenous Peoples' Day (Oct. 11). Visit eiteljorg.org/events for details.

Saturday
OCT 16
9 a.m.

Members-Only Coffee and Conversation
Enjoy a morning with artist in residence Melanie Sainz (Ho-Chunk). Members will receive a discount for the workshop immediately following the conversation. Registration required. For more information visit eiteljorg.org/events or to register, contact Jennifer Hiatt at jhiatt@eiteljorg.com or 317.275.1360.

Saturday
OCT 16
10 a.m.

Quill earring workshop with Artist in Residence Melanie Sainz
Meet Artist in Residence Melanie Sainz (Ho-Chunk) and make a pair of quill earrings to take home. Limited tickets available at <https://ejquill.eventbrite.com>

Saturday
OCT 30
10 a.m.-7 p.m.

Día de Muertos Community Celebration
Experience *Día de Muertos*/Day of the Dead at the Eiteljorg with partners Arte Mexicano en Indiana and Nopal Cultural. Enjoy free admission while you learn the history of the holiday, watch performances and demonstrations, explore artwork, support local artists and create art. See page 6, and visit eiteljorg.org/diademuertos or eiteljorg.org/dayofthedeath for more details.



OCT 10–NOV 2

Día de Muertos Community Altar Exhibition
Peruse elaborate altars designed by local artists and organizations to honor the lives of those who have passed. Artwork by Eduardo Robledo is featured; it is on display and free to view in the Lilly Theater.

Tuesday
NOV 9
6:30 p.m.

Spirit & Place: Truthsgiving: Using Food to Dismantle a Colonial Myth

Through cooking demonstrations and more, explore why romanticized versions of Thanksgiving are harmful to Native peoples and how you can incorporate Indigenous alternatives into your celebration. This Spirit & Place festival event features a presentation by Jonathan James-Perry (Aquinnah Wampanoag) and food demonstration by Andi Murphy (Navajo). Free; pre-registration required. eiteljorg.org/events



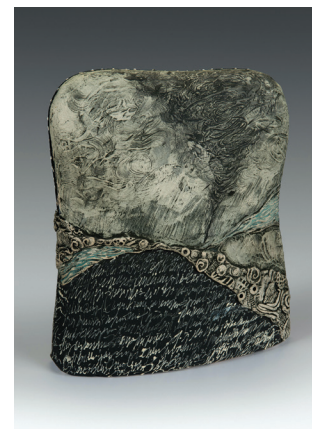
Spirit & Place

Shifting BOUNDARIES

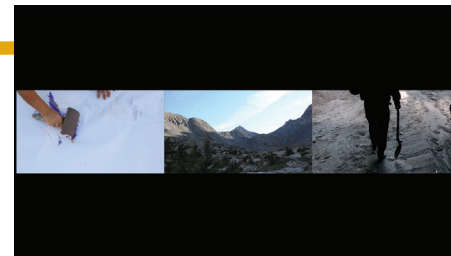
NOV 13, 2021 – FEB 6, 2022

Shifting Boundaries: 2021 Eiteljorg Contemporary Art Fellowship

Compelling paintings, installations, sculptures and textiles by the five Eiteljorg Fellows will be highlighted in *Shifting Boundaries*, the 11th round of the Eiteljorg Fellowship. See story on page 2.



Steven Yazzie (Diné / Laguna Pueblo) ^ (*Looking For Tsosido*) (film still), 2013
Digital video, single channel with audio (3:28 mins)
Loan from the artist



Thursday
NOV 11
5:30-8:30 p.m.

Fellowship Award Ceremony and Celebration

Reservations: \$35 members, \$50 non-members, \$100 Fellowship Fans. To register, contact Jennifer Hiatt at 317.275.1360 or jhiatt@eiteljorg.com.

Friday
NOV 12
2:30-4 p.m.

Fellowship Artists VIRTUAL Discussion Panel

Live streaming of a discussion panel with the Eiteljorg Fellows, conducted by IUPUI Museum Studies students; visit eiteljorg.org for details.

Anita Fields (Osage / Muscogee) *What the Earth Knows*, 2005
Clay, slips
Loan from the artist

Saturday
NOV 20

Grand reopening of the Nina Mason Pulliam Education Center featuring the R.B. Annis Western Family Experience

The museum's children's discovery area reopens with a new focus on five diverse families of the West. See story on page 10.

Saturday
NOV 13
9 a.m.

Members-Only Coffee and Conversation

Join the 2021 Eiteljorg Fellows for a morning of conversation. Members only; registration required. For more information visit eiteljorg.org/events or to register, contact Jennifer Hiatt at jhiatt@eiteljorg.com or 317.275.1360.

Saturday
NOV 13
10 a.m.

Shifting Boundaries: Eiteljorg Contemporary Art Fellowship Tour and Talk

Enjoy a public gallery talk in *Shifting Boundaries* with the Eiteljorg Fellows, followed by a moderated discussion with the artists in Clowes Sculpture Court. Open to the public with regular museum admission; members are free.



NOV 20–JAN 17, 2022

Jingle Rails: The Great Western Adventure

Experience the wonders of the American West right here at the Eiteljorg Museum. *Jingle Rails*, Indy's most affordable family holiday attraction, returns for its 12th year. New this year: iconic landmarks from San Francisco. See story on page 4, and reserve tickets online at eiteljorg.org/jinglerails.



Saturday
NOV 20
8 a.m.

Members-Only Jingle Rails and Family Area First Look

Get an exclusive first look at *Jingle Rails: The Great Western Adventure* and the newly renovated Nina Mason Pulliam Education Center, including the R.B. Annis Western Family Experience. Members only. Visit eiteljorg.org/events to register.

Thursday
DEC 2
5:30 p.m.

Members-Only Evening with Jingle Rails Designer Laura Dolan

Learn about the inspiration and creativity behind the outstanding displays of *Jingle Rails* with Laura Dolan of Applied Imagination, the botanical architecture firm that designed the model railroad backdrops. Members only. Visit eiteljorg.org/events to register.

NOV 20–DEC 6

Toy Drive: Toys for Turtle Mountain

Please consider donating new toys to the Toys for Turtle Mountain's Annual Toy Drive for children of all ages on the Turtle Mountain Band of Chippewa Indians Reservation in Belcourt, North Dakota. Donations of new toys — along with monetary donations to cover costs of transporting them — can be dropped off inside the museum's main entrance between Saturday, Nov. 20 and Monday, Dec. 6. For questions, contact anordholt-dean@eiteljorg.com or 317.275.1319.

Friday
DEC 3

Noon
Curator's Choice Series: How Do We Make Jingle Rails Happen?

Join Steve Sipe, the Eiteljorg's director of exhibition and graphic design, as he discusses the process of presenting *Jingle Rails: The Great Western Adventure*. Check eiteljorg.org/events for more information.

Saturday
DEC 11
1 p.m.

Build a Jingle Rails House Workshop

Build your own *Jingle Rails* themed house model out of natural materials through a workshop led by Eiteljorg staff. Materials and instruction provided; bring your creativity. Fee. To register, visit: <https://ejhouse.eventbrite.com>

Friday and Saturday
NOV 26 & 27

Thanksgiving weekend programming

Watch *Truthsgiving: Using Food to Dismantle a Colonial Myth* online at eiteljorg.org and enjoy activities in the museum throughout the holiday weekend.

Calendar continued on next page

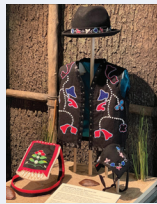
Artists in Residence

The Eiteljorg's artist in residence program brings Native and Western artists from across North America to the museum and to classrooms, libraries and senior centers in the local community. Visiting artists provide a mix of small onsite and virtual online offerings. Check eiteljorg.org/events for details, including registration for events.

Melanie Sainz (Ho-Chunk)

OCT 12-23

Melanie Tallmadge Sainz is an artist in several media, including basketry, quillwork and beadwork. She is the founder of Little Eagle Arts Foundation (LEAF) and Native Presence Gallery and Learning Center in the Wisconsin Dells. Meet Melanie and learn about her art and culture during open studio sessions on Saturdays, Oct. 16 and 23, 1-4 p.m. Melanie will lead an artist talk at noon Wednesday Oct. 13, check eiteljorg.org/events for virtual or in-person options.



Richard Gabriel Jr.

OCT 25-30

Richard Gabriel resides in Tijeras, New Mexico and operates a local studio where he creates traditional Spanish Colonial tinwork and paints — an element he often includes in his tinwork. Gabriel teaches tinsmithing at Santa Fe Community College. Meet Richard and create your own tin ornament during the *Día de Muertos* Community Celebration on Oct. 30.



Margaret Jacobs (Akwesasne Mohawk)

In person: NOV 8-13, Virtual: NOV 15-20

Margaret Jacobs is known for her sculpture, jewelry and drawings. She uses all three approaches to explore the tension and harmony between natural and man-made, often intermingling unexpected and contradicting materials to explore those relationships. Meet Margaret and learn about her art and culture during her open studio session on Saturday, Nov. 13, 1-3 p.m. Margaret will lead a virtual artist talk at noon Wednesday Nov. 17, check eiteljorg.org/events for details.

Continuing through Jan. 18, 2022 *Honoring Women*

Powerful Women II: Contemporary Art from the Eiteljorg Collection

The museum's exhibition *Powerful Women* highlights and celebrates diverse women artists in contemporary art. This second rotation features works by African American, Latina, Asian American, Native American and European American women artists.



Image by Christa Barleben

Western Book Club

The Western Book Club meets to discuss an array of titles. To participate, contact museumprograms@eiteljorg.com.

NOV 10

Future Home of the Living God by Louise Erdich

JAN 12

Crazy Brave by Joy Harjo (Mvskoke / Creek Nation)

Saturday

DEC 4

1 p.m.

Holiday Card Workshop

Learn the art of block printing and create your own set of holiday cards. All supplies are included. No previous experience necessary. Fee. To register, visit: <https://ejcards.eventbrite.com>

Monday

JAN 17

Martin Luther King, Jr. Day
Enjoy **FREE** admission to the Eiteljorg Museum. This is the final day to see *Jingle Rails: The Great Western Adventure*. Check eiteljorg.org/jinglerails for details.

Continuing through May 2022

Native American Customary Art 101

Explore selections from our Native American customary art collection that encompass diverse materials and techniques and showcase the gifted imaginations of Native artists. See story on page 11.

Arthur Holmes, Sr. (Hopi, born 1945)
Soyok Wuhti (Ogre Woman), 1990-2000, cottonwood, paint
Collection of the Eiteljorg Museum
Gift of R. Terrance and Rebecca J. Rader, 2005.32.1



Image by Shawn Miller

COMING IN FEBRUARY:

Leon Jett Memorial Lecture

Each year during Black History Month, the Leon Jett Memorial Lecture features noted authors and scholars who discuss the contributions and all-too-often unknown historical and contemporary stories of African Americans and Blacks throughout the West. Check eiteljorg.org/events for details.

LOOKING AHEAD:



Saturday

MAR 5

1 p.m.

Joy Harjo Poetry Reading

Joy Harjo (Mvskoke / Creek Nation) is the 23rd United States Poet Laureate and the first Native American to hold the title. She is an internationally known award-winning poet, writer, performer and jazz saxophonist. Join her for a poetry reading and talk about Harjo's personal experiences. Her appearance is part of the Eiteljorg's multi-year *Honoring Women* theme.

IN MEMORIAM

Jennifer Complo McNutt, 1957-2021

By Elisa G. Phelps, vice president and chief curatorial officer

As we mourn the passing of Jennifer Complo McNutt, curator of contemporary art, we also celebrate her many accomplishments during an incredible 30-year tenure at the Eiteljorg Museum. During that time, Jennifer curated more than 50 exhibits and contributed to numerous publications. The last exhibit Jennifer worked on to completion was *Powerful Women: Contemporary Art from the Eiteljorg Collection*, which highlights the work of women artists. She did not feel one exhibit was enough to do justice to the subject, so she created two different versions. The first rotation focused exclusively on Native artists, while the second rotation (on view through Jan. 18, 2022) features a diverse group of women artists.

Jennifer was herself a powerful woman. Sometimes her power was behind the scenes, as she always wanted the art and artists to be front and center. At other times, Jennifer's power manifested in sheer force of will, occasionally fierce, sometimes contrary, but always passionate about contemporary art and the artists who create it.

That passion was evident in Jennifer's gallery tours and "Curator's Choice" talks. So was her formal training as an artist, with a bachelor of fine arts degree from Indiana University, Bloomington, and a master of fine arts degree (painting) from the Tyler School of Art at Temple University in Philadelphia. Her curatorial practice was informed by that training, with her artist's eye tuned to the nuances of technique, line, color, form, texture and composition. Her observations on things as simple as the thickness of a paint stroke added deeper levels of meaning to familiar works of art.

Since the beginning of the biennial Eiteljorg Contemporary Art Fellowship in 1999, Jennifer was the power behind the Fellowship, which highlights the work of contemporary Native artists. She cultivated long-term relationships with the artist Fellows, and those efforts continue to benefit the museum. She wanted visitors to understand that Native art is on a continuum through time and that contemporary Native art is both authentically Native and an integral part of the contemporary art canon. Jennifer was an integral part of the Eiteljorg Museum and the contemporary art community, and her passion, knowledge and exuberant spirit will be much missed.

Contributions made in her memory will support the newly established Jennifer Complo McNutt fund for the acquisition of Native American contemporary fine art. A full obituary is at this link: <https://bit.ly/3haqUDR>



Eiteljorg curator of contemporary art Jennifer Complo McNutt (above) curated many exhibitions at the museum, including the Fellowship show *Native Art Now!* that ran Nov. 11, 2017-Jan. 28, 2018, below.



Thank you to the following donors for memberships and gifts received April 1-July 31, 2021.

Due to space limitations, only contributions of \$100 or more are listed with the exception of gifts in honor or in memory. If your name is not listed as you would like it, please accept our apologies and call 317.275.1360.

Membership gifts (\$125 and above)

Vision Circle
\$25,000 and above
Pat and Bob Anker
Steve Cagle
Phyllis Cockerill
L.G. and Alyce Edwards
Stan and Sandy Hurt
Cathy Turner

Chairperson's Circle
\$10,000-\$24,999
Virginia Merkel
Mel* and Joan Perelman

President's Society
\$5,000-\$9,999
Bud and Karen Colglazier
Ellen M. Reed
Ann M. Stack
Marion Wolen

Golden Eagle Society
\$2,500-\$4,999
Dawn and Tom Bennett
Terry and Connie Marbach
Dr. Newell O. Pugh, Jr.
Dr. and Mrs. Randall G. Rowland
Mr. and Mrs. Robert E. Schloss
John Vanausdall

Eagle Society
\$1,500-\$2,499
Neal and Jenai Brackett
Georgia Buchanan
Rollin and Cheri Dick
LaMarr Easter and Cary Neeley
Jane S. Farber
Perry and Michelle Griffith
Susan and Mike Lewis
Nataly and Jonathan Lowder
Delores Muller
Afshan and Adam Paarlberg
Margaret Piety and Josef Laposa
Amanda and Eric Rail
Mr. and Mrs. J. David Resley
Robert and Barbara Shortle
Frannie Sing
Michael P. Skehan
Dr. Oksana and Peter Withey

Advocate Members
\$1,000-\$1,499
Mr. and Mrs. William E. Stanley

Patron Members
\$500-\$999
Dr. and Mrs. Thomas A. Broadie
Douglas Hale and Meg Hardison
Martha and Gordon Helms
Susan and Mark Hoeffert
Mr. Martin A. Kuntz, Jr.
Gail Plater and William M. Plater
Steven and Andrea Richel
Marjorie and Karl Schnelle

Sustaining Members
\$250-\$499
John and Joann Birdzell
Patricia and Jesse Clark
Christopher and Cindy Coble
Charles and Louise Gay
Dr. Joseph and Mrs. Eleanor Hingtgen

Continued on next page

Volunteering



Image by Sophia Holt-Wilson

On May 25, Eiteljorg volunteers and local gardening groups got their hands dirty at a planting session at the museum's Deer Fountain on the Eiteljorg lawn. Due to wind and drifting water from the fountain, the area surrounding it has been difficult to cultivate. Volunteers planted the grounds with plants native to Indiana that are expected to thrive there. Participating with museum volunteers were the Indiana Native Plant Society, Marion County Master Gardener Association and Indiana Wildlife Federation. The fountain is officially known as the Billie Lou and Richard Wood Fountain, featuring the bronze sculpture *Whitetail Deer* by artist Ken Bunn. If you would like to volunteer to help with *Jingle Rails*, contact jharkness@eiteljorg.com or 317.275.1325.

Continued from previous page

Gary and Katie Hoefle
Katie and Camron Land
Joseph and Sharon Olson
Ann and Steve Smith
Jerry and Linda Stark
James and Cheryl Strain
David and Joann Wehlage
James P. White

Contributing Members
\$125-\$249

Shirley J. Amond
H. Dean and Donna Andrews
Dr. Charles R. Bantz and
Dr. Sandra Petronio
Steve and Debbie Benefiel
Eric and Dana Brock
Marsha Brown
Benjamin and Amy Cox
Wayne Craig
John and Susan Davis
George and Wendy Dougherty
Patrick and Polly Egan
Kurt Ehrhardt
Bill and Coleen Ehrig
Dale Fletcher and Janet Clegg
Tom and Mary Grein
Patricia Herron and Russell Rumansoff
Joan Harris
Dave and Barb Hillger
Peter and Emily Howard
Marilyn Jones
Seth Keever and Maggie Loisel
Keith and Gloria Keppel
R. Edward and Nancy Koskie
Gerald and Shirley Lewis
Bob Lucid
Sandy and Greg MacAllister
Laurette McCarthy and Harold Baker
Patricia S. Mohler
David Montgomery and Ben Cusack
Michael and Brenda Noone
Robin and Gregory Pemberton
Noreen and Alan Poorman
Dr. and Mrs. Robert Pribush
Robert and Martha Ravensberg
Robert and Janet Redmond

Dale and Mary Jo Roberts
James and Maureen Ross
Dr. Yocheved Samson and
Mr. Joel Samson
Mr. Michael Sawyers
Richard and Carol Schwartz
Theresia and Archey Shearer
Frank E. Smurlo, Jr. and Frank E. Smurlo, III
John and Lena Snethen
Clayton Taylor and Julie Koegel
Robert Thacker
Frank and Jane Walker
Sarah Whaley and Gary Hoffer
Ken Wherry
Dr. James and Barbara Williams
Thomas and Denise Wilson
Dennis and Patti Wright
H. David and Jane Wright
Doug Yost and Kim Mathews
Mark and Debra Zwoyer

Donors

All memorial and honorarium gifts are listed. Gifts in other categories are for \$100 or more.

Annual Fund and other designated gifts

Anonymous (11)
Dr. Caryn C. Anderson and Mr. David Anderson
Pat and Bob Anker
Craig and Cris Anderson
Carol Barmore and Phil Hineman
Dr. Elizabeth A. Beck
Dr. Kerry and Elizabeth Blanchard
Mary Beth and Robert Braitman
Dr. and Mrs. Thomas A. Broadie
Phyllis Cockerill
Dr. and Mrs. Michael R. Cohen
Angie and Dick Darlington
L.G. and Alyce Edwards
Roger and Mindy Eiteljorg
Drs. Richard and Becky Feldman
William and Jennie Forehand
Linda Gilman
James and Sareta Gregory

Joy and Dan Hess
Gary Hoffer
Cindy and Robert Hoyer
Pam and Gary Jursik
Larry and Connie Kane
Ann W. King
Lezlie Laxton
Carla and Mike Leppert
Michael and Janie Maurer
Virginia Merkel
Dr. and Mrs. John Moenning
David and Virginia Mullins
Harry Nungesser
Frank N. and Patricia L. Owings
Mel* and Joan Perelman
Mr. Hilary Raab, Jr.
Mr. and Mrs. Terry Rader
Ellen M. Reed
Mr. and Mrs. Thomas E. Reilly, Jr.
Maryanne and Randy Robertson
Frederick and Carol Schilling
Ann M. Stack
Dr. and Mrs. Thomas Taylor
Cathy Turner
Ms. Christy Vezolles
Dennis Jay and Karen Whitaker
Brian and Tara Witchger
William and Kimberly Witchger II
Jim and Karen Wolf
Don and Angela Woodley
The Saltsburg Fund - Donald and Ann Buttrey

Gifts in Honor and Memory

In honor of Eiteljorg employees
John Vanausdall
In honor of the first people of Indiana
Leonor Interiano
In honor of the Powerful Women in their life:
Joan Harris
Victoria Harris
Patricia Hiatt
Jennifer Hiatt
Salla Wilson
Dave Wilson

In honor of Susan Lewis
Pat and Bob Anker
Kay Hinds
Lynn Lambuth
Nataly and Jonathan Lowder
Patt Norton
John Vanausdall

In honor of John Vanausdall
Pat and Bob Anker

In memory of Michael E. Dillow
Tom and Patty Gibbs

In memory of Lena Green
Ms. Sue E. Arnold

In memory of Mel Perelman
Anonymous

Dr. Caryn C. Anderson and
Mr. David Anderson
Pat and Bob Anker
Sarah C. Barney
Barbara Branstetter
Vaughn and Nancy Bryson
Nancy Busk
Phyllis Cockerill
Mark and Monica Dill
Robert and Joannie Everitt
David and Gisele Found
Patty and Thomas Gibbs
Kay Hinds
Stan and Sandy Hurt
Chris Katterjohn and Dona Siebler
Rebecca and Charles Kendall
The Family of Lloyd and Diane Johnson
Lynn Lambuth
Bob LaPerriere
Dr. and Mrs. John C. Lechleiter
Mr. and Mrs. R. Michael Leppert
Nataly and Jonathan Lowder
Steve and Jane Marmon
Susie and Howard Maxwell
Jim and Jackie Morris
Dorit Paul
Joan Perelman
Robert N. Postlethwait
Anne and David Shane
Hannah Step
Barbara and David Stillabower

Ms. Jane B. Templeton
Cathy Turner
John Vanausdall
Robert and Joyce Wisner
Mr. and Mrs. Stephen D. Zimmerman

In memory of Thomas D. Seeley
Phyllis Cockerill

Kim and Dorothy Eicher
Evelyn Gengenbach
Ronald and Judith Hagan

Kay Hinds
Robert Kassing
Nataly and Jonathan Lowder
Steve and Jane Marmon
Susie and Howard Maxwell
James and Jennifer Meece
J. Edward and Mari Sandifer
Lucinda Smyth
Cathy Turner
John Vanausdall
William and Emily Ward
Angela Weiser
Mr. and Mrs. Stephen D. Zimmerman
Jack and Sue Zinser

Foundation, corporation and government gifts
\$100,000 and above
Efroymsen Family Fund, a Central Indiana Community Foundation Fund
\$40,000-\$99,999
Allen Whitehill Clowes Charitable Foundation, Inc.
Nicholas H. Noyes, Jr. Memorial Foundation, Inc.
Terra Foundation for American Art
\$7,500-\$19,999
Ayres Foundation, Inc.
\$1,000-\$7,499
Arts Midwest
BMO Harris Bank
Capital Group
Christel DeHaan Family Foundation
Faegre Drinker
The Namaste Foundation
The Penrod Society

Matching gift companies
Eli Lilly and Company Foundation
The Capital Group Companies
Charitable Foundation

Gifts in kind
Faegre Drinker
Honeymoon Image & Design
Kahn's Catering
Native Plants Unlimited
Stuart's Household Furniture Moving and Storage, Inc.

Western Art Society gifts
David and Gisele Found

Project 2021 capital campaign

Pat and Bob Anker
Don and Ginger Bievenour
Dr. Rosanne Bonjouklian
Mary Beth and Robert Braitman
Steve Cagle
Phyllis Cockerill
Drs. Richard and Becky Feldman
Fritz R. and Sandy Gordner
Kelly and Stephan Masoncup
Michael and Janie Maurer
Virginia Merkel
Charlotte Mittler
Noreen and Alan Poorman
Dr. and Mrs. Randall G. Rowland
Mr. and Mrs. Robert E. Schloss
Chad Slaughter
Bill and Roberta Witchger
Nicholas H. Noyes, Jr. Memorial Foundation, Inc.
Terra Foundation for American Art

Project 2021 endowment gifts
Gannett

Thomas G. and Susan C. Hoback
Curator of Native American Art, History and Culture Endowment
Tom and Sue Hoback

Artist in Residence
Barbara and Ron Masters

Jingle Rails: The Great Western Adventure

Presented by:
Fifth Third Bank

Sponsored by:
Butler Family Foundation
Katz Sapper & Miller
Kortepeter Family
OneAmerica
The Sunrise Foundation, a fund of the Indianapolis Foundation

With additional support from:
Stuart's Household Furniture Moving and Storage, Inc.

Shifting Boundaries: The 2021 Eiteljorg Contemporary Art Fellowship

Presented by:
Lilly Endowment Inc.

Sponsored by:
Efroymsen Family Fund, a Central Indiana Community Foundation Fund
David H. and Barbara M. Jacobs Foundation
David H. Jacobs



Learn how the Eiteljorg Museum navigated through the pandemic year of 2020. To read the Eiteljorg's 2020 Annual Report, *You Bring Out Our Best*, visit <https://eiteljorg.org/our-story/board/#annualreport>

Making the most of museum membership

By Jennifer Hiatt, membership and donor relations manager



This past February, I was thrilled to accept the role of membership and donor relations manager for the Eiteljorg Museum. The Eiteljorg is much more than where I hang my professional hat; it's a place that captured my heart early on with its dynamic collection of Western and Native art, and where I've created cherished memories with family and friends.

Over the past 30 years, I've attended the annual Indian Market and Festival many times, admiring the fine jewelry, art, pottery and stunning paintings. (Save the date: June 2022 celebrates 30 years of Indian Market!) In addition, I've enjoyed the special events and exhibits such as *Ansel Adams* and *The Reel West*, two of my favorites. To visit *Jingle Rails* is an annual family tradition inspired by my dad and grandfather who both loved trains.

Being able to connect people and families to this extraordinary place is a privilege for me as the membership and donor relations manager. I get to help you make memories and build traditions here too. But, membership is more than just benefits and free admission; it's a commitment to the Eiteljorg Museum's mission. Members are the heart of the organization. Your contributions help us expand, preserve and maintain the museum's priceless collection. You allow us to share this rich history and tell unforgettable stories, reaching and teaching others through exhibits and programs. Because of you, visitors learn about different cultures, ask questions, consider new perspectives and build their appreciation for art and artists.

Jennifer Hiatt, museum membership and donor relations manager, is seen here with the Wilson Hurley triptych painting, *October Suite: Grand Canyon*, in the Eiteljorg's Western Art Galleries.

As we embark on reimagining our Native American galleries and presenting new exhibits, we will invite you — our members and friends — to be among the first to see what 2022 has to offer.

There is no better time to be a member. If you have meant to renew, do it today. If you have considered bringing a friend, plan a visit soon and explore the galleries and grounds. Are you already thinking about the holidays? Consider gifting an Eiteljorg Museum membership this holiday season (they make great stocking stuffers.) And don't forget to watch for upcoming e-newsletters with more information on members-only events, programs, trips and exhibit previews.

Thank you for supporting the Eiteljorg Museum. Your commitment is greatly appreciated. To renew your membership or buy one for a friend or family member, visit eiteljorg.org/give, email jhiatt@eiteljorg.com, or call 317.275.1360.



BEAUTIFUL NATIVE AMERICAN JEWELRY AND ART

The Eiteljorg Museum Store offers an outstanding selection of Native American jewelry, including silver and turquoise Navajo bolos and opal pendants. Stock up on holiday gifts for the family, including a wide selection of pottery, Western home décor, coffee table books, cookbooks, Native histories, art catalogs — including the *Shifting Boundaries* Eiteljorg Fellowship exhibit catalog — as well as clothing accessories and children's items. The store also can take orders online and ship merchandise.



Eiteljorg
FRANK AND KATRINA BASILE
Museum Store

STORE HOURS
MON-SAT: 10 a.m. to 5 p.m.
SUN: Noon to 5 p.m.
317.275.1300
800.878.7978

store@eiteljorg.com

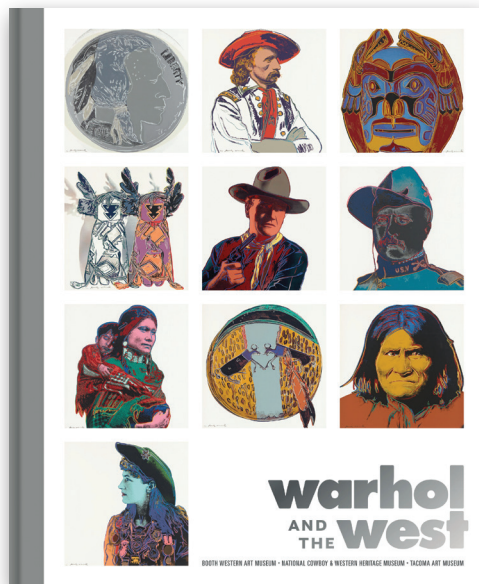
[@Eiteljorg.Store](https://twitter.com/Eiteljorg.Store)

eiteljorg.org/visit/shop/

Eiteljorg Museum of American Indians and Western Art

White River State Park • 500 W. Washington St.
Indianapolis, IN 46204
www.eiteljorg.org

COMING IN THE FEBRUARY ISSUE



WARHOL'S WEST **MARCH 5 – AUGUST 7, 2022**

Did you know that Pop artist Andy Warhol (1928-1987) was an aficionado of the American West? A thought-provoking exhibition of Warhol's late-career artwork that explores his interest in Western icons and his merging of the mythic West with contemporary art and popular culture is coming to the Eiteljorg in 2022. The exhibition presents a range of his Western imagery, including prints of Geronimo, General Custer, Annie Oakley and John Wayne, as well as the source material and process that he used to create them. *Warhol's West* was organized by the Booth Western Art Museum, Cartersville, Georgia, and the Cochran Collection, La Grange, Georgia.

The 140-page art catalog *Warhol and the West*, published by the original exhibition's organizing museums and the University of California Press, will be available in the Frank and Katrina Basile Museum Store during the traveling exhibition *Warhol's West*.

Sponsorships for Eiteljorg exhibitions and programs are available. Contact Dave Wilson, corporate partnerships, at dwilson@eiteljorg.com or 317.275.1333.

Honoring Women



Stay connected with the Eiteljorg on social media and at eiteljorg.org. You can also sign up for our weekly e-newsletter at eiteljorg.org.

For general information about the Eiteljorg Museum, call **317.636.9378**.

